

# City of Rio Vista Community Based Transportation Plan (CBTP)

Kick-Off Meeting  
September 26<sup>th</sup>  
Rio Vista City Hall



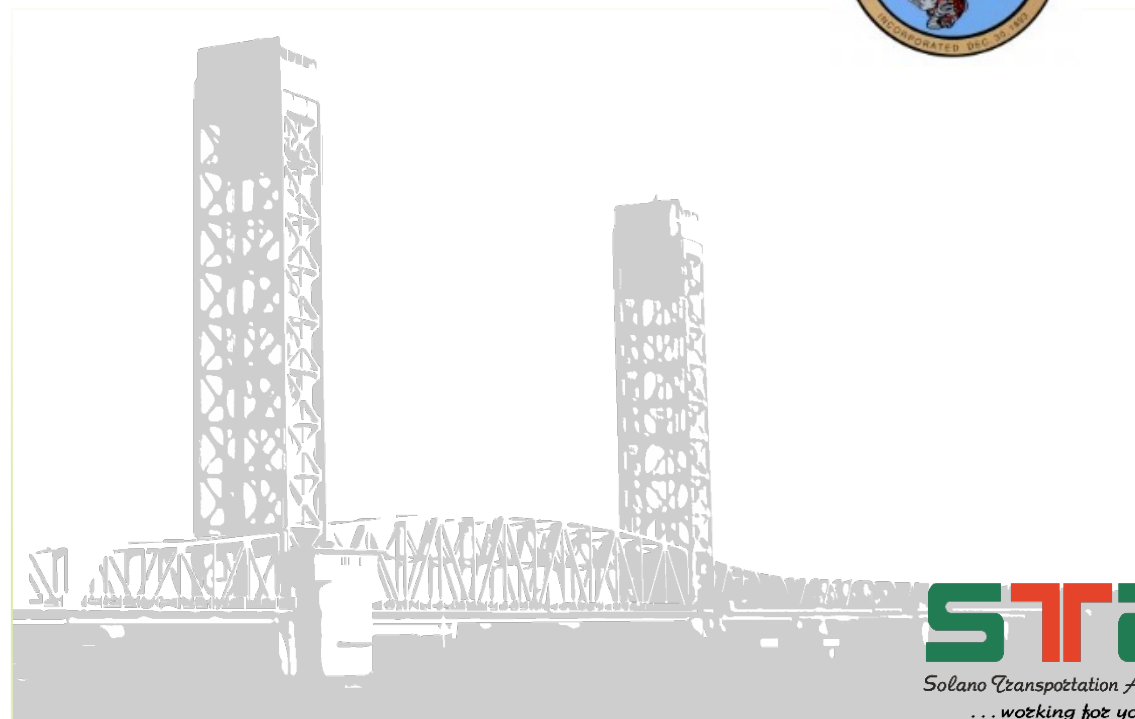
# City of Rio Vista Community Based Transportation Plan (CBTP)



Mayor Ron Kott



Walt Stanish,  
Vice Mayor





The Solano County Transportation Authority (STA) in partnership with the City of Rio Vista is implementing a Community-Based Transportation Plan (CBTP) to study and listen to transportation challenges facing Rio Vista's residents.



# Community Based Transportation Plan (CBTP)

- 1<sup>st</sup> Community Based Transportation Plan (CBTP) for Rio Vista.
- CBTPs engage residents in identifying their transportation needs and challenges.
- It involves prioritizing issues and developing strategies to address the transportation challenges that have been raised.
- The CBTP can be used to seek funding for priority projects and help guide transportation planning and project implementation for Rio Vista.





Rochelle Sherlock, ED.D.  
STA CONSULTANT

# Delta Breeze

Brandon Thomson,  
Transit Manager



## DELTA BREEZE SERVICE ROUTES

### LEGEND

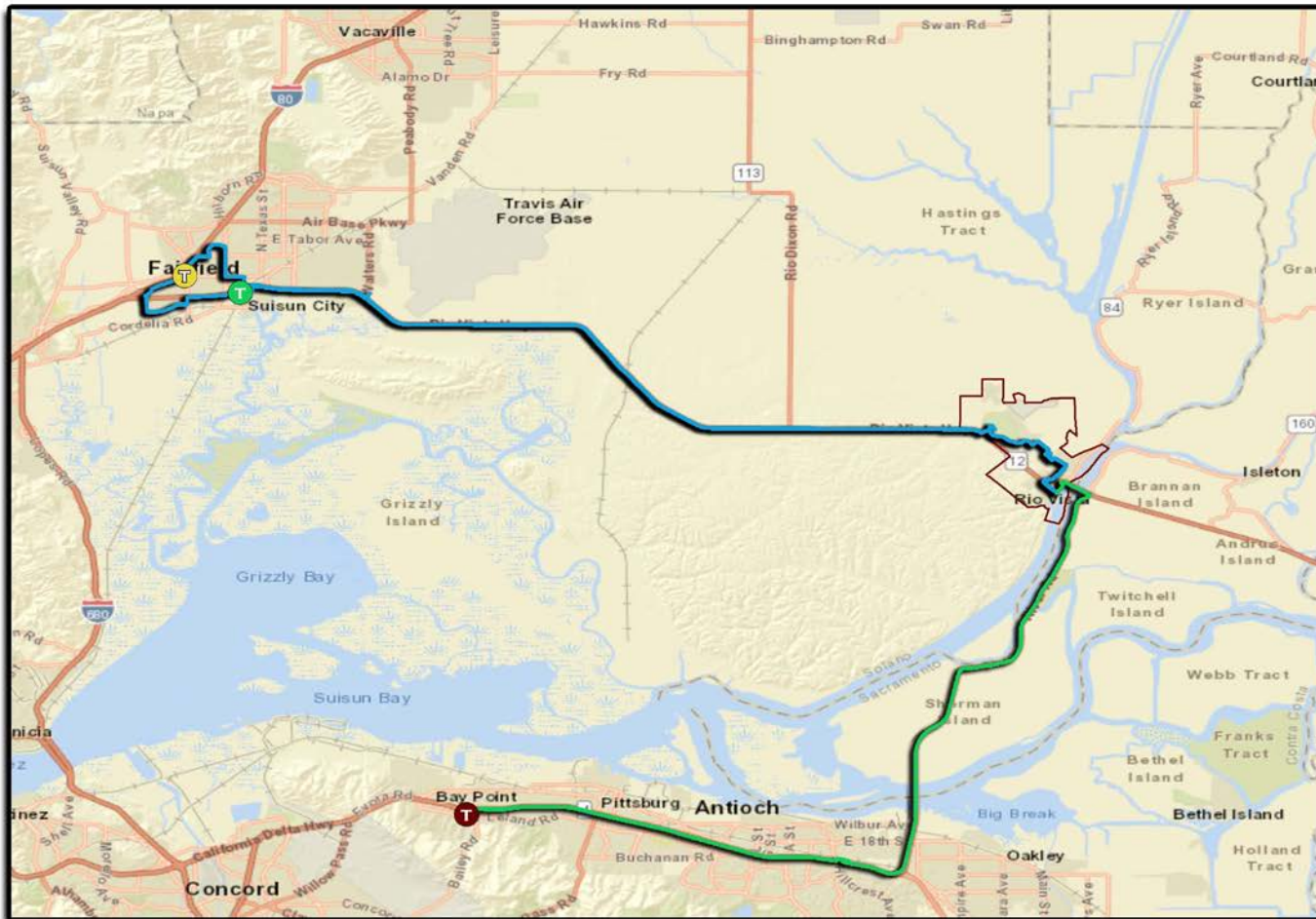
 ROUTE 50

 ROUTE 52

 FAIRFIELD TRANSIT STATION

 SUISUN-FAIRFIELD AMTRAK STATION

 PITTSBURG/BAY POINT BART STATION



Rio Vista  
Delta Breeze  
Routes

# Options and Services for Seniors and People with Disabilities

- ▶ Dial a ride service or booking through cell phone application for local trips
- ▶ Deviated Service – All trips can perform limited deviation within a one-mile radius of the route with a 24-hour notice (space available basis)
- ▶ Discounted Fare for age 55 years and older
- ▶ ADA Paratransit – Priority service for ADA certified paratransit passengers on it's Dial-A-Ride service





# Community Based Transportation Plans (CBTPs)

- Plans to study and identify transportation gaps and needs in economically disadvantaged communities
- STA previously completed CBTPs in the City of Dixon in 2004, Cordelia, Fairfield, and Suisun Cities in 2008, and East Fairfield, Vacaville in 2012, and in September 2020, the STA and the City of Vallejo completed the updated phase of its CBTP. The second phase of the City of Vallejo CBTP is currently underway with support from a California Air Resource Board (CARB) Grant.
- Additionally, the updated City of Suisun City CBTP was completed in August 2022.



- Rio Vista CBTP to be completed in FY23/24



# Solano Mobility Programs



Lorene V. Garrett  
Senior Program Coordinator  
STA's Employer Commuter Program



Debbie McQuilkin  
Senior Mobility Coordinator  
STA Older Adult and People with  
Disabilities Programs

# Solano Mobility Programs

- Mobility Programs and Services for all Solano County Older Adults, People with Disabilities, Low-Income residents, Transit-Dependent Individuals, and Commuters.
- Employer Commuter Program encourages residents and employees in Solano County to use alternative modes of transportation to support affordability and reduce greenhouse gas emissions.



*Designated as a Consolidated  
Transportation Services  
Agency since 2013*



Solano Mobility Call Center (800) 535-6883



# Solano Mobility Employer Commuter Program

For all commuters who are Solano County residents/employees

- ▶ 2-for-1 Solano Express Incentive
- ▶ Amtrak + Lyft Program (Fairfield, Suisun City & Vacaville Employees/Residents)
- ▶ Bucks for Bikes Incentive (18+, can commute to college)
- ▶ Commute Challenge
- ▶ First/Last Mile Program
- ▶ Guarantee Ride Home Program
- ▶ Guaranteed Ride Program for Solano Express Riders
- ▶ Vanpool Program

[www.solanomobility.org/commuter-programs](http://www.solanomobility.org/commuter-programs)



**Bucks For Bikes:**  
Solano Mobility offers up to \$300 towards the purchase of a new bike! Call for more details.



# Solano Mobility

## Equitable Access to Justice Program

- ▶ Partnership with Solano County Superior Courts
  - ▶ 1-year pilot started July 1, 2023
  - ▶ Prospective Jurors
    - ▶ Solano County Superior Court in Fairfield
    - ▶ Solano County Superior Court in Vallejo
  - ▶ Collaborative Court Participants
    - ▶ 11 Solano County Locations



**Goal:** Eliminate affordability/availability barrier to Solano County Superior Court participation by providing 100% subsidized rides.

[www.solanomobility.org/courts](http://www.solanomobility.org/courts)

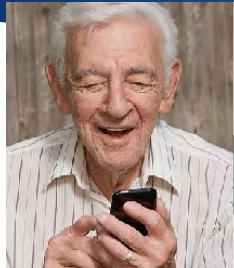
# Solano Mobility Programs for Older Adults, People w/ Disabilities, Low-Income and Veterans

- Programs and Services shaped by feedback from the Community via Mobility Studies, Plans and Outreach
- All programs are either low (subsidized) or no cost
  - ▶ One Stop Call Center
  - ▶ Medical Trip Concierge Program w/GoGo Grandparents
  - ▶ ADA Eligibility Program
  - ▶ Travel Training Programs
  - ▶ Taxi Card Program (PEX)
  - ▶ Veterans Mobility Program
  - ▶ ADA Private Transportation
  - ▶ Clipper Card Sales – Adult & Senior
  - ▶ Senior Safe Driving Info



***One Stop Call Center for ALL Mobility Program and Transportation Questions***

# Solano Older Adults Medical Trips Concierge Services



**Solano Older Adults  
Medical Trip Concierge  
Service provided through  
GoGo Grandparent  
utilizing Lyft & Uber**



**Medical trips within Solano County are subsidized by 60% for residents who are age 60 and older\*\***

\* Subsidized by 80% for low income individuals



**Service is available  
24 hours/7 days a week**



**\*\* Must be able to enter  
and exit vehicle without  
any assistance**



**Register at Solano Mobility:  
800-535-6883**

**Monday - Friday / 7am - 5pm**



For more information call Solano Mobility at 800-535-6883 or visit [solanomobility.org](http://solanomobility.org)

## 24/7 Concierge Service provided through GoGo Grandparents

- ▶ Utilizes Lyft and Uber via GoGo Grandparents
- ▶ Seniors over 60
- ▶ Veterans of any age and ADA eligible
- ▶ For MEDICAL and ESSENTIAL appointments around Solano County\*
- ▶ 30 reduced costs trips a month
- ▶ Low-income option available
- ▶ Trips to Antioch available for Rio Vista residents



**Solano Mobility Call Center (800) 535-6883**



# Travel Training

*Discover new places! Learn to ride transit on your own or with Friends!*

- ▶ One-on-One Travel Training
- ▶ Group/Classroom Travel Training
- ▶ Field Trips
- ▶ Travel Training Videos

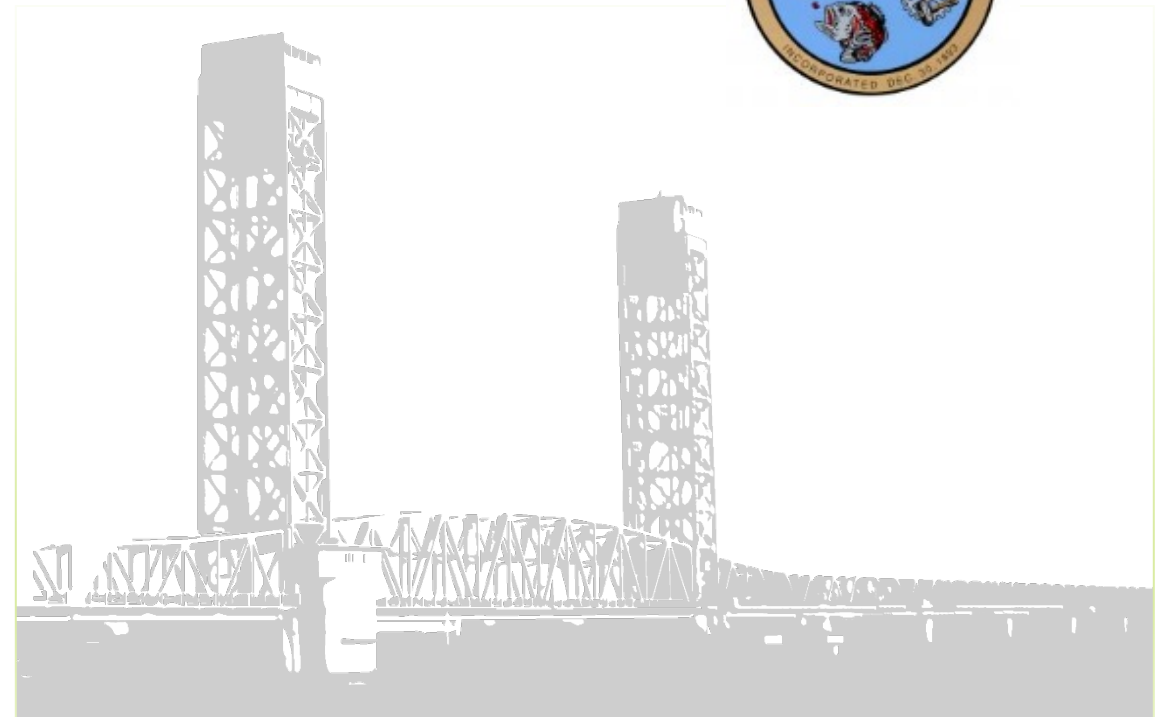


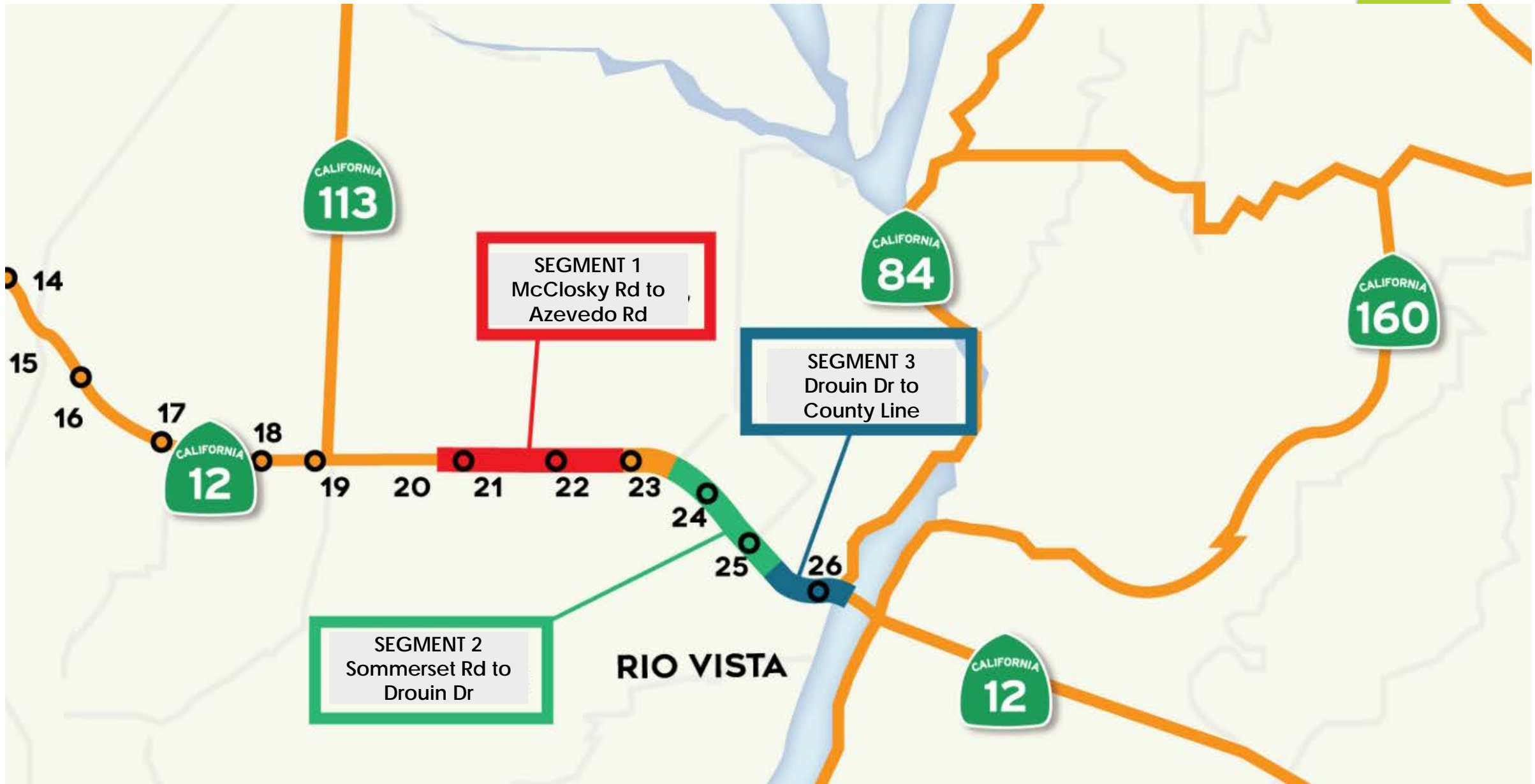


# Rio Vista Public Works Projects



Robin Borre,  
Director of Public Works









# SEGMENT 3 – Drouin Drive to Sacramento County line



- Rehab Pavement Cracks and Potholes
- Address Drainage Issues
- Complete Streets Improvements
  - Install Continuous ADA Accessible Sidewalks
  - Create New Pedestrian Crossing
  - Update Existing Crossings
  - Create Class 4 Protected Bike Lanes
  - Collaborate with City & County to Install Additional Streetscape Improvements

## LEGEND

- Existing sidewalk to be replaced
- - - New sidewalk
- |||||  ||||| New/improved pedestrian crossing

-  Bus Stop, (location TBD)
- - -  - - - Bike Lane Class 2
-  — Bike Lane Class 4

# SEGMENT 3 – 3R & Complete Streets to Transform Downtown

## Opportunities for Improvement:

- Roadway:
  - Pavement failure at several locations
  - Nonstandard cross-slopes
  - Existing roadway flooding
  - Excess roadway width
  - Conflicts with Truck traffic
- Pedestrians:
  - Intermittent sidewalks
  - Non-standard widths
  - Curb ramps not all ADA compliant
  - Improvements to crossings needed
- Cyclists:
  - No bike lanes
  - Improvements to crossings needed



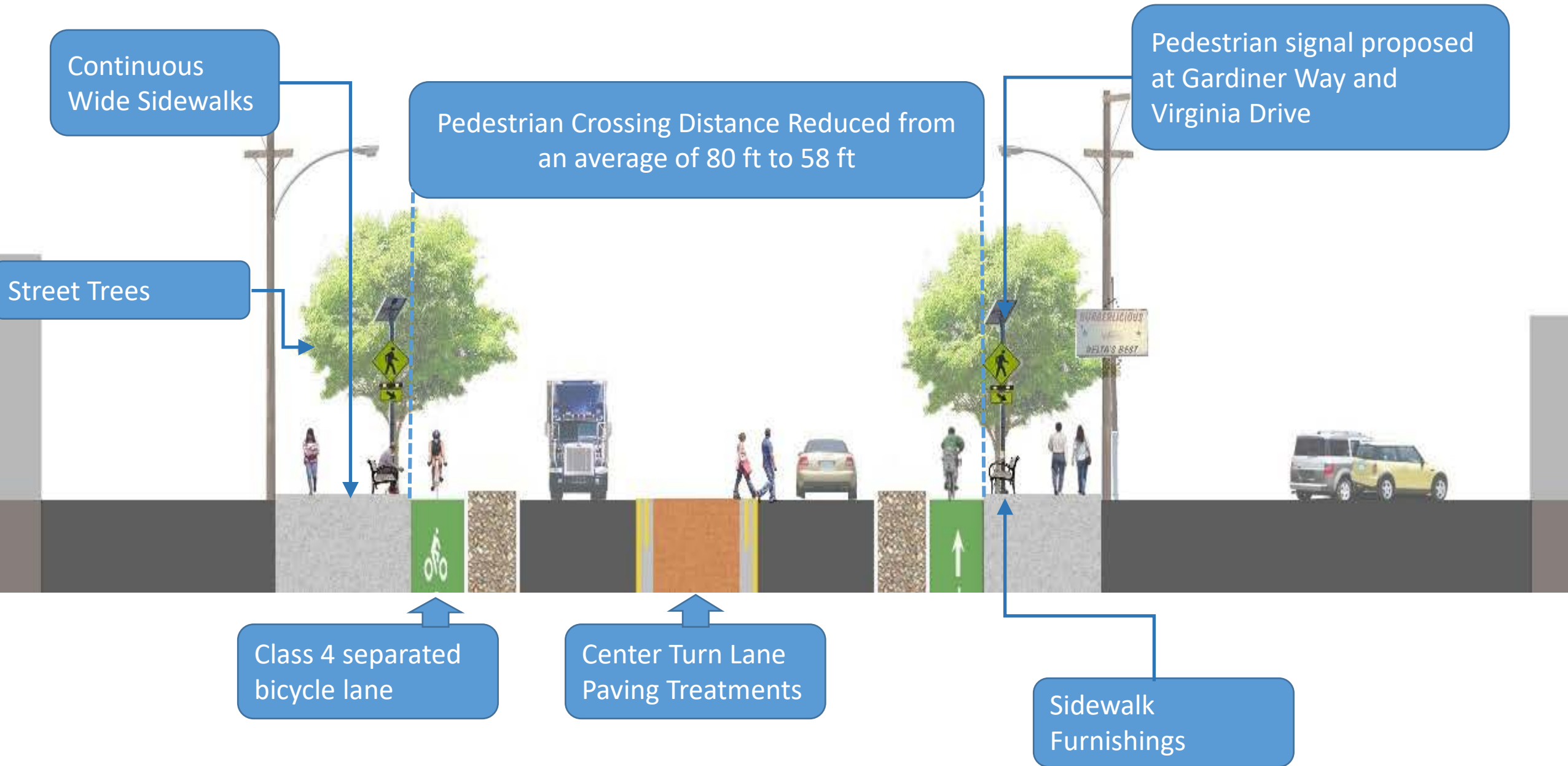
# Additional Improvements – Providing Safer Crossings



 Existing Signalized Crosswalk

 Pedestrian Beacon

# SEGMENT 3 – Enhancements and Improvements



# SEGMENT 3 – Proposed Enhancements

## Schematic Plan



# SEGMENT 3 - Improvements + Funding

## Schematic Plan - Detail



Street trees



# SEGMENT 3 - Improvements + Funding

## Schematic Plan - Detail



# Pedestrian Crossings

## Park Space – Hillside Terrace



# SEGMENT 3 – Funding and Milestones

CAP Cost	Engr. Estimate
Construction Capital	\$14M
STA Contribution	\$1M
City of Rio Vista Contr.	\$400K

Milestone	Target Date
Construction Start	Summer 2025
Construction End	Summer 2027

# Bike Lane Projects

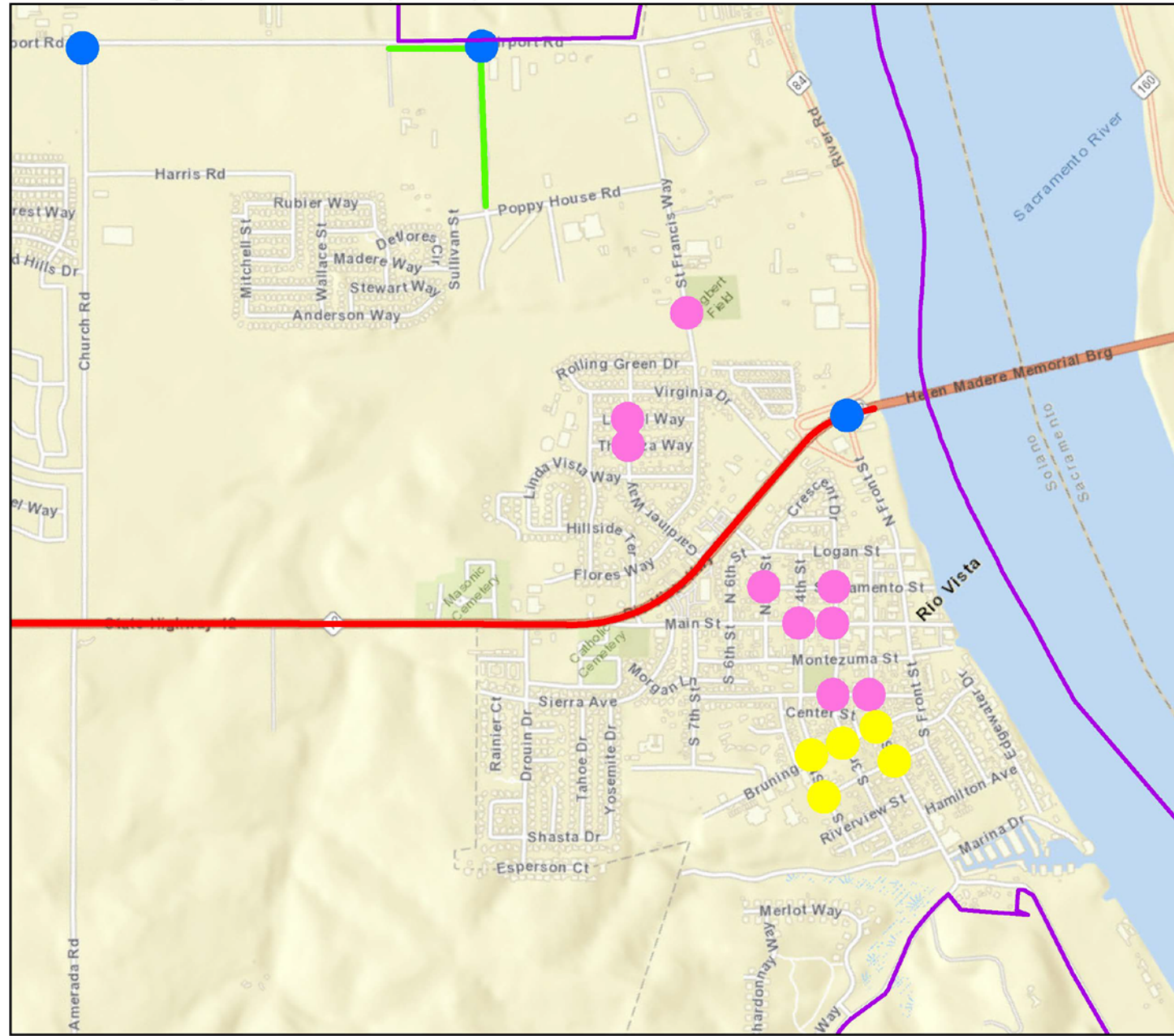
- Highway 12 Complete Streets Project – Segment 3 (Bridge to Drouin Drive)
- Highway 12 Complete Street Project – Segment 2 (Drouin Drive to Sommerset)
- Airport Road – Harris to Norman Richardson and Norman Richardson Airport Rd to Poppy House
- Future Airport Road Multi-Use Trail Project



# Pedestrian Projects

- HSIP Cycle 10
- HSIP Cycle 11
- Highway 12/84 Off Ramp to Front Street Crossing

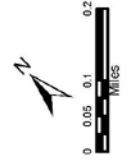




**Legend**

- CITY LIMITS
- CALTRANS COMPLETE STREETS IMPROVEMENTS
- HSI 11 BIKE LANE IMPROVEMENTS
- HSI 10 CURB RAMPS / PEDESTRIAN CROSSINGS
- HSI 11 CURB RAMPS / PEDESTRIAN CROSSINGS
- HSI 10 STRIPING / PEDESTRIAN CROSSINGS

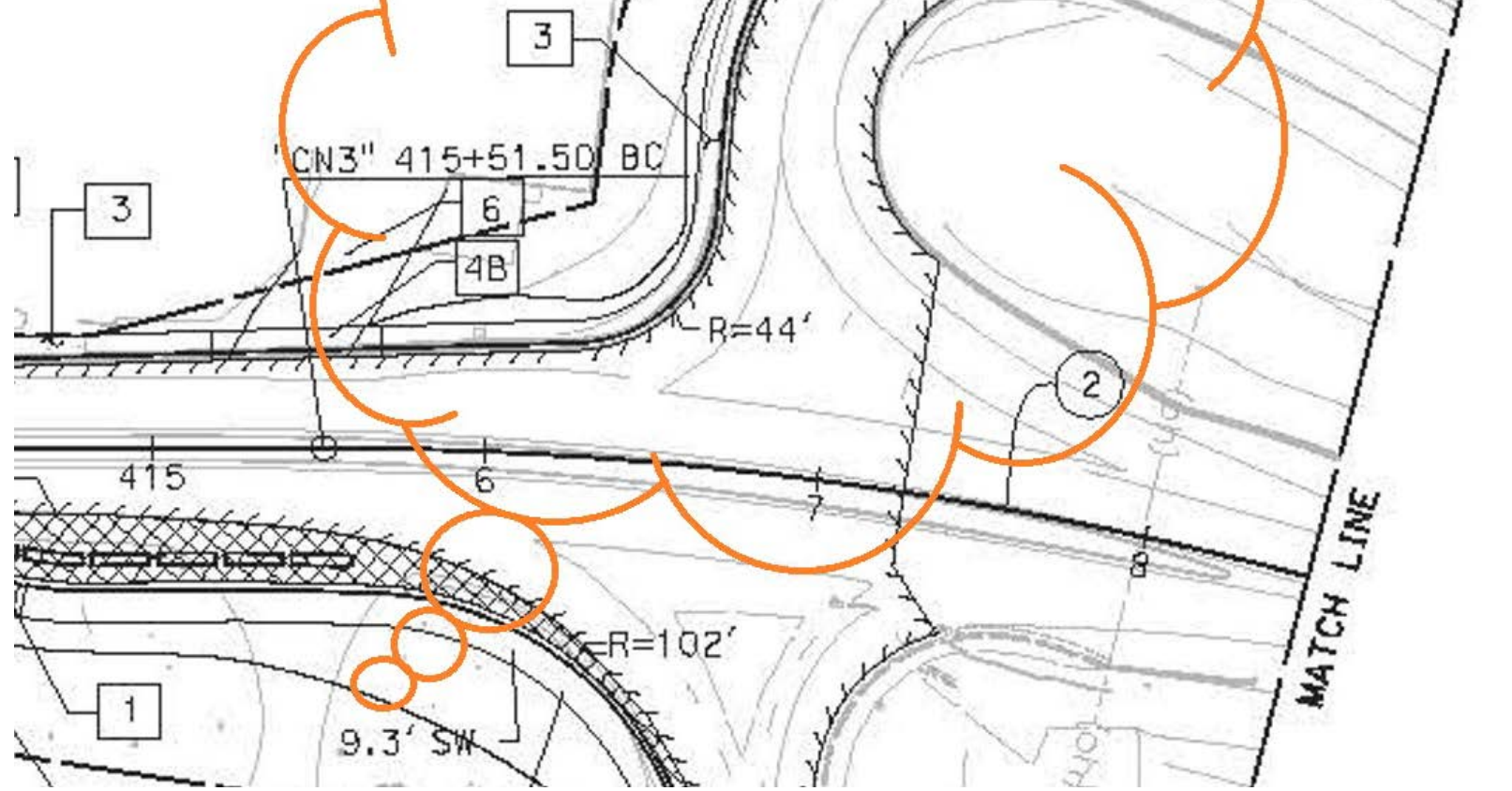
**City of Rio Vista  
HSIP PROJECT LOCATION MAP  
SEPTEMBER 2023**



N 3°08'01" E 108.31'

191.51' Rt  
"CN3" +06.50  
END SW  
END CURB (TYPE A2-6)

14.15' Rt  
"V" +53.18 CONFORM  
Beg SW  
Beg CURB (TYPE A2-6)



# YSAQD GRANT

Sidewalk

## Legend

- CA-84 & N Front St
- Eagle Tire
- Feature 1
- Untitled Placemark

CPN Pipeline

Untitled Placemark

Untitled Placemark

Untitled Placemark

Untitled Placemark

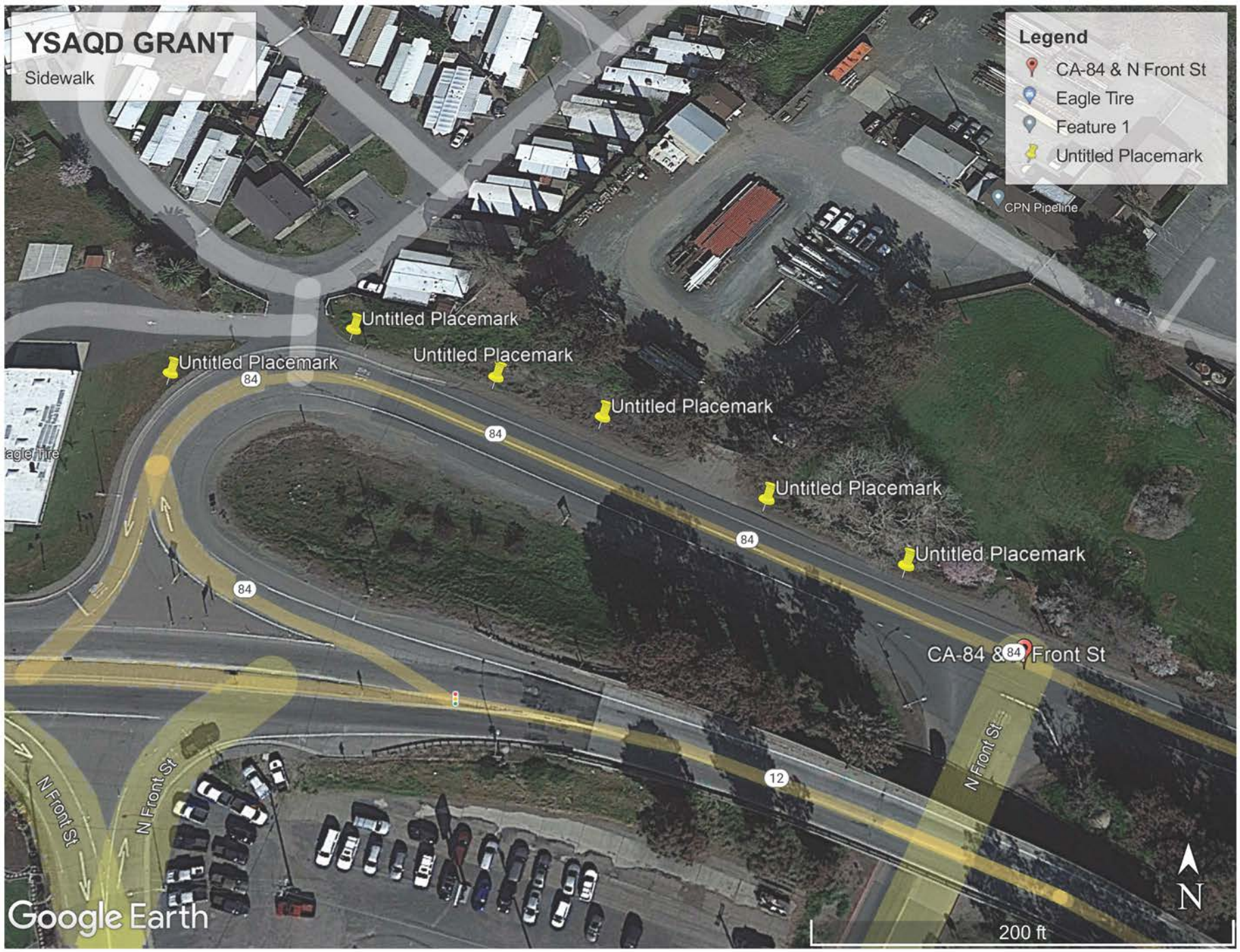
Untitled Placemark

Untitled Placemark

CA-84 & N Front St

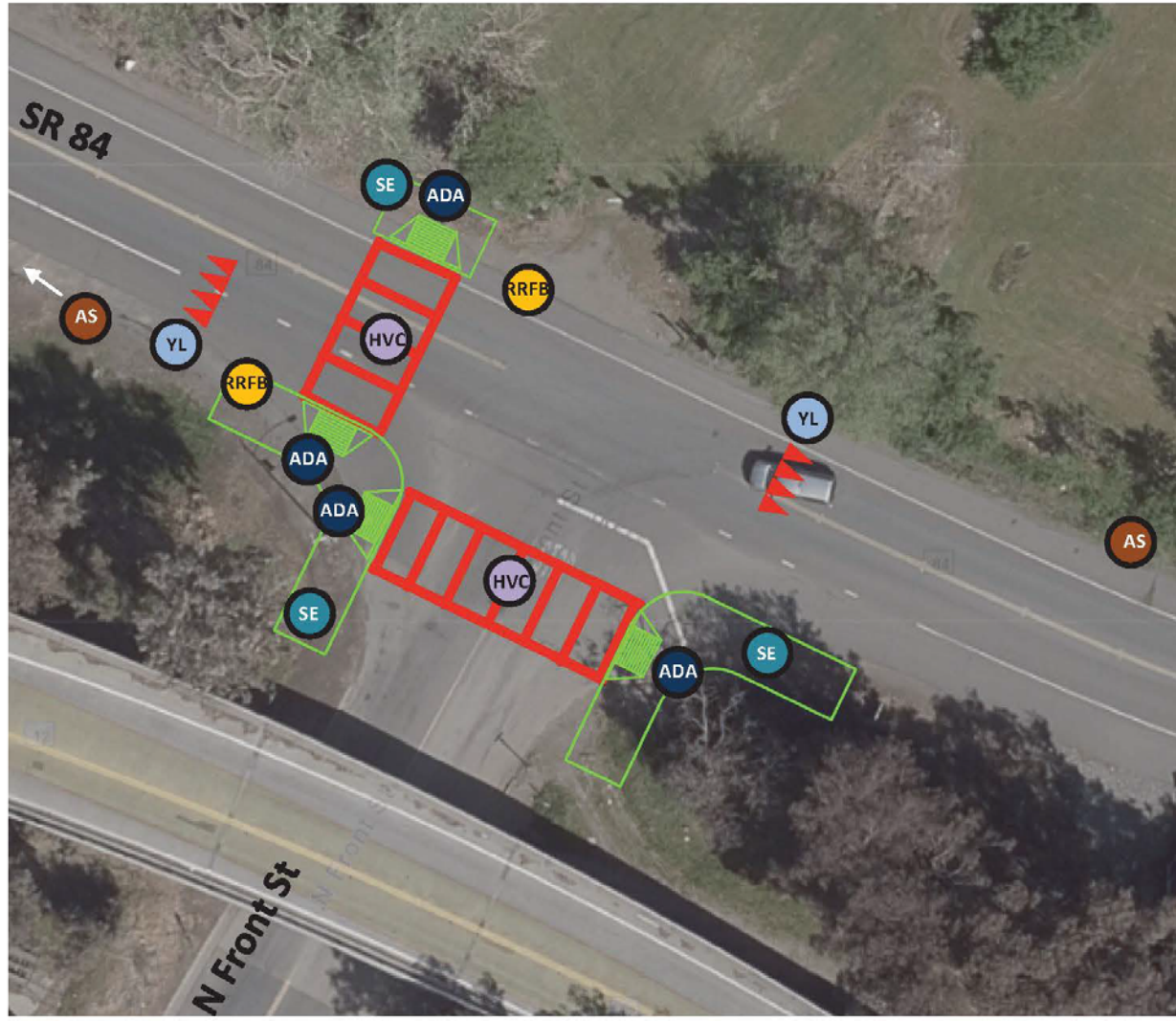
Google Earth

200 ft



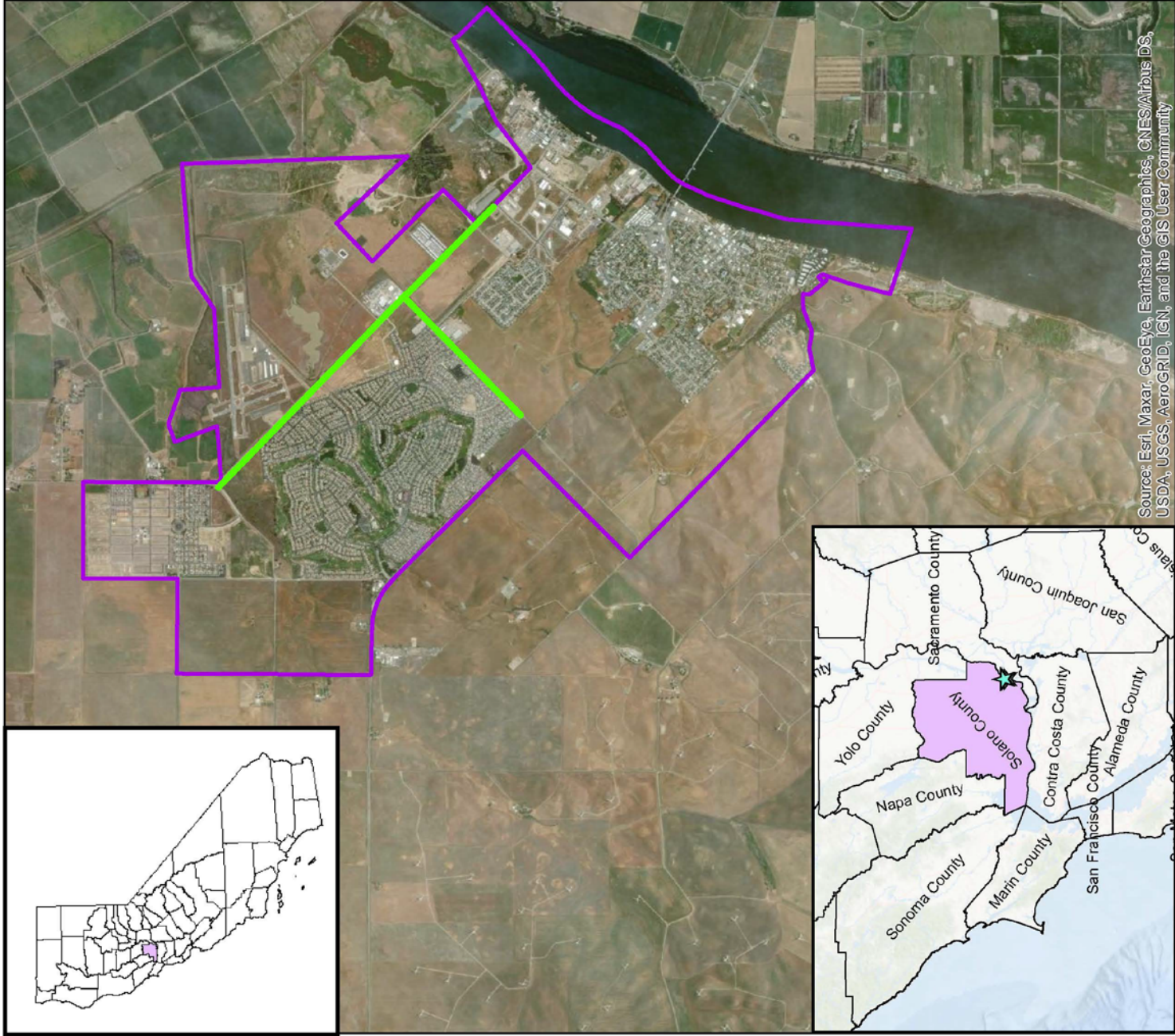


# Proposed

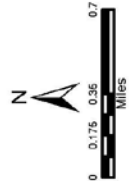


**Improvements**

- RRFB System
- High Visibility Crosswalk
- Yield Line with R1-5 Sign
- ADA Curb Ramp
- Advance Sign
- Sidewalk Extension



Source: Esri, Maxar, GeoEye, Earthstar Geographics, CNES/Airbus DS, USDA, USGS, AeroGRID, IGN, and the GIS User Community



### City of Rio Vista

ATP GRANT  
PROJECT LOCATION MAP  
AIRPORT ROAD AND CHURCH ROAD BIKE PATHS  
MAY 2022

#### Legend

-  CITY LIMITS
-  PROJECT LOCATION







It's time to hear  
from you!!

---



# Transportation/Mobility Challenges

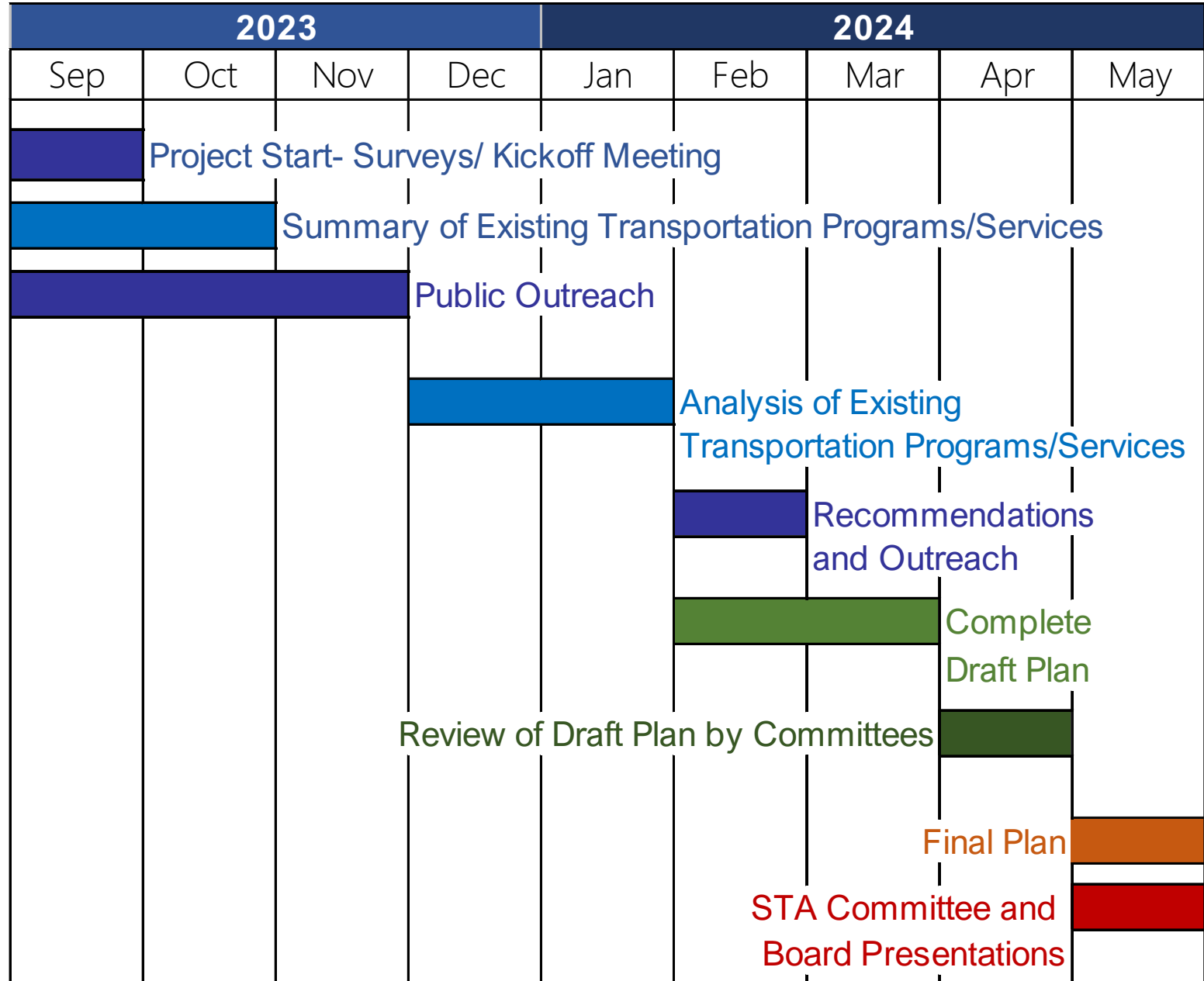
*What transportation/ mobility  
challenges do you have here in Rio  
Vista, or beyond?*

# Priorities and Strategies

*What are your ideas on how to address one or more of the mobility/ transportation challenges?*

# Next Steps: Rio Vista Community Based Transportation Plan (CBTP)

---



# Ways to Get Involved

## Surveys

Please Take our survey by using the QR Code to the right or visit the Rio Vista Community Based Transportation Plan website.

## Website

For more information, visit the project website:

<https://www.solanomobility.org/rvcbtp/>



Rio Vista CBTP

To Take the survey online, use the QR code:

Please submit survey by January 31<sup>st</sup> 2024

The Solano County Transportation Authority (STA) is partnering with the city of Rio Vista to implement a Community-Based Transportation Plan (CBTP) to study and listen to the transportation challenges facing Rio Vista residents. The CBTP will help the City and STA better understand current transit conditions, the impacts of the Covid-19 pandemic, and opportunities to make mobility services more accessible and efficient for older adults, youth, low income, individuals with disabilities, and all residents across the community. By providing your feedback, you will help us design transportation system improvements that work for you!

### A. How do you Travel?

1. How do you usually get around? (Check all that apply.)

- Walk  Drive  Bicycle  Delta Breeze  Get a ride/Carpool  Taxi  Lyft/Uber  Someone Drives Me  
 Non-Profit Agency  Other: \_\_\_\_\_

2. Is traveling to any of these destinations difficult?

(Check the destinations and name specific locations that are hard to reach.)

- Job (Specific location) \_\_\_\_\_  
 Grocery shopping (Specific location) \_\_\_\_\_  
 Parks and recreation (Specific location) \_\_\_\_\_  
 School and daycare (Specific location) \_\_\_\_\_  
 Bart  Suisun train depot  Other destinations (Which ones?) \_\_\_\_\_

### B. Identify Transportation Needs

Which transportation problems are the most serious for you? For EACH type of transportation, identify up to THREE issues that you think are the most serious for you. (Check three boxes and specify the location or route.)

EE issues that most need improvement.)

streets?) \_\_\_\_\_

streets?) \_\_\_\_\_

s, broken paving (Where?) \_\_\_\_\_

at safety issues?) \_\_\_\_\_

issues that most need improvement.)

ere?) \_\_\_\_\_

ere?) \_\_\_\_\_

at safety issues?) \_\_\_\_\_

paving, grates (Which streets?) \_\_\_\_\_

ries \_\_\_\_\_

k up to THREE issues that most need improvement.)

No improvement needed

ding to schedule (Which lines?) \_\_\_\_\_

d access to information (Maps, schedules, etc.) \_\_\_\_\_





uage other than English (Which language?) \_\_\_\_\_

benches, lighting (Which bus stops?) \_\_\_\_\_

stops? What safety issues?) \_\_\_\_\_

? What safety issues?) \_\_\_\_\_

ort wait time) \_\_\_\_\_

   **Comment Card**  
**City of Rio Vista**  
**Community-Based Transportation Plan** 

If you want to be contacted regarding mobility issues, please provide:

Name: \_\_\_\_\_ City: \_\_\_\_\_

E-mail: \_\_\_\_\_ Phone: \_\_\_\_\_

Comments: \_\_\_\_\_  
\_\_\_\_\_  
\_\_\_\_\_  
\_\_\_\_\_

More room on back for additional comments.



# THANK YOU!!!!

Brandon Thomson  
Rio Vista Delta Breeze  
707-399-3234

Lorene Garrett  
Senior Program Coordinator/Employer Commuter  
707-399-3218

Debbie McQuilkin  
Senior Transit Mobility Program  
Coordinator  
707-399-3231

To learn more visit:  
[www.solanomobility.org](http://www.solanomobility.org)

